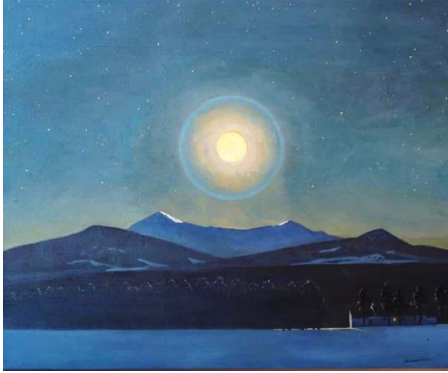


ROCKVILLE PRESBYTERIAN CHURCH (RPC)

RPC Newsletter

WEBSITE: WWW.ROCKVILLEPRES.ORG

The Reverend Michael McNamara



Greetings in the Name of the Lord!

I am writing this article on the day following the winter solstice and I am convinced that the solstice has something important to teach us this year, and the fact that it all ties in together with Christmas and the birth of Christ, the very manifestation of God's Love into the world, makes it all the better. As we know, the winter solstice is the longest night of the year. Now, if one is paying really close attention, basically measuring and observing the sun rise and its position,

identifying the solstice is pretty easy. But for the rest of us, who are just going through our days, unless somebody told us it was the solstice we probably wouldn't notice, because the change is so incremental. For most of us, the winter solstice is just another long night to get through, knowing eventually there will be long days again, but not now.

And yet the solstice is the turning point, barely noticeable, but still the moment of change. It will not be for another month or two before we begin to actually notice that the days are getting longer, and yet it is the subtle shift of the solstice that signals that move. Christmas is the same way. Off in the little town of bethlehem, where just about no one noticed except maybe a few, God's love became manifest in a radical way and no one (except maybe the magi and the shepherds) really noticed for another 30 years or so. And yet it was that subtle moment that marked the shift.

Worshipping online has been a little bit like the long nights of winter. We all want it be over, we all want spring, but we also know we are not there yet. But, the ever important but, if the solstice and Christmas are any indication, the tide is most likely already turning, the subtle shift, if it hasn't happened yet will certainly be coming soon, and it will be so minute that just about all of us will miss it until after the fact. In fact the vaccines that are coming through may be the indication that the "solstice" came a while ago, and we are just starting to notice that the days are a tad bit longer.

We will gather back together, maybe not as soon as we would like, but it will happen, there are subtle signals all around, just as God's love is often subtle signs and nudges, it is just a matter of being dialed into what to look for. Soon enough we will know that the solstice has passed, soon enough we will be fully aware of God's love in our midst. I look forward to those coming revelations, even if, for now, we remain apart.

In Peace, Mike

Those serving as Lay Leader this month:

Second Sunday of Christmas,
Baptism of the Lord,
Second Sunday After Epiphany,
Third Sunday After Epiphany,
Fourth Sunday After Epiphany,

January 3rd - Pat Wolff
January 10th – Mary Ann Eull
January 17th - Anne Baur
January 24th - Phil Ruxton
January 31st – Aimee Ranaivoarijaona

CHILDREN'S SUNDAY SCHOOL

Zoom Lesson:

Date: Sunday Morning, January 3, 2021

Time: 9:30 AM - 10:00 AM

Lesson Title: "My Father's House"

Activity Bags for Lesson Distributed to children:
Pat Wolff

Parents will receive an email with the Zoom information.



Greetings from the RPC Session members: Anne Baur, Sue McGee Anderson, Bernice Brown, Marty Heilman, Elke Herzfeld, Mary Williams, Jerry Macomber and Aimee Ranaivoarijaona

- The Stewardship Committee reported that the Stewardship Campaign Collected \$108,766 pledged by 27 members as of December 10.
- Date of the RPC Annual Meeting was set for **Sunday January 31, 2021.**
- The Session members extend best wishes for a very Merry Christmas and a Happy New year to all the Members of Rockville Presbyterian Church. May 2021 hold many blessings for each of you!

Sincerely, Anne Baur, Clerk of Session.

Next Session Meeting is **Tuesday, January 12th, 2021.**

Deadline for Meeting Submission is **Tuesday, January 5th, 2021**

Connect with Members and Friends at Coffee Hour



Have you been missing Fellowship? There's an opportunity for Fellowship every Sunday following our regular Live Stream service. Join us at our new Coffee Hour on ZOOM. Check the weekly emails for the ZOOM invitation.

Directory Updates

New updates to the directory will be published once a month. If you have an update or know of an update, please call the office 301-762-3363 or email to Rockvillepres1@verizon.net



CHRISTMAS JOY SPECIAL OFFERINGS

LEADERSHIP: PAST, PRESENT, AND FUTURE

Christmas Joy Gift

We are collecting the Christmas Joy Gift on Sundays through January 5. Keep an eye out for the Christmas Joy Gift envelopes in the pews. The Christmas Joy Offering is a PC(USA) collection intended to support former and future Presbyterian pastors. 50% of the offering makes it possible for students to learn and grow in faith at Presbyterian-related schools and colleges equipping communities of color. 50% of the offering assists current and retired church workers and their families with critical financial needs.

God saw the great needs of the world and offered a perfect gift, a gift that brought God and humanity closer together. God's perfect gift to us, Jesus Christ, offered the power of being with us. According to Matthew's Gospel, one of the names given to Jesus is Emmanuel, which means "God is with us." In Jesus, we receive the perfect gift of God being with us, and of being with those who were often overlooked, left out, vulnerable, or in need. What a powerful gift, a perfect gift, the gift of... being with.

1

PER CAPITA APPORTIONMENT

Every church is apportioned a share of the expenses of the presbytery, the synod, and the General Assembly for ecclesiastical purposes. The apportionment is based on church membership. The amount varies with the needs of the presbytery, synod, and General Assembly, and is a regular expense payable by this church at the spring meeting of presbytery. The amount to be paid this year per communicant member is

- ☐ Electronically
- ☐ Cash
- ☐ Check

Name _____

2021 Per Capita Assessment - Each year RPC makes a per capita contribution to support the many programs of the National Capital Presbytery (NCP) and the national office of the Presbyterian Church USA (PCUSA). The 2021 assessment is \$42.67 per member. RPC members are encouraged to make a contribution

above their annual pledge amount for this purpose. This can be done through RPC's on-line giving platform or by sending a check to the church at 215 W. Montgomery Ave., Rockville MD 20850. In either case be sure to designate that the gift is for RP

C's per capita obligation. To learn more about

NCP programs, go to thepresbytery.org. For information about PCUSA initiatives go to pcusa.org.

Schedule for Sunday Mornings

9:00 am suspended until spring.

10:30 am – Live Stream Sunday Service,
Live stream is accessible through the link below.

<https://www.christianworldmedia.com/live-site/RPCPraise> OR

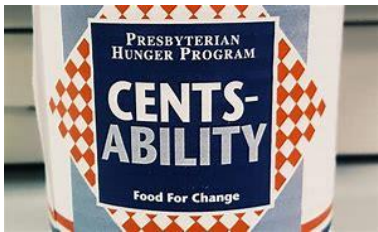
The church website RockvillePres.org,

followed by ZOOM Coffee Hour, instructions are provided in weekly emails. Contact the office at 301-762-3363 or by email at Rockvillepres1@verizon.net to be added to the mail blast.



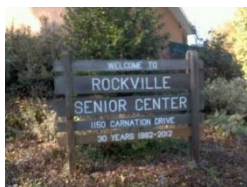
- 7 *Innocent Ranaivoarijaona*
- 9 *Harry Redd*
- 9 *Jonathan Ruxton*
- 10 *Aimee Ranaivoarijaona*
- 12 *Katie Tucker*
- 13 *Adam Jung*
- 16 *Phyllis Morrow*
- 17 *Caroline Tucker*
- 30 *David Tucker*

Cents-Ability: Remember to Collect your Coins!



Don't forget about Cents-Ability! Cents-Ability is part of the Presbyterian Hunger Program, where congregations collect coins at mealtimes to fight against hunger. Half of our collection will go to the Presbyterian Hunger Program and half of our collection will go to Manna Food Center. We will collect our coins when we are able to worship together again.

Donate Food at the Rockville Senior Center



The Rockville Senior Center (1150 Carnation Drive Rockville, MD 20850) is holding food drives to collect shelf-stable food for seniors on Tuesday and Wednesday from 9 a.m. to 12 pm. The collection is “drive-up and drop-off”, so those leaving donations do not need to leave their cars. Donations are also accepted at other times and can be left in the blue bin under the side parking lot awning.

Thank You's

Fall Fun Day, yielded a large group and they accomplished a lot. Jack Baur thanks all the RPC volunteers who showed up for the Fall Fun Day. Thanks to Mike McNamara for joining us and the extra level of support.



Jerry Macomber, Brian Macomber, Sean Macomber, Rachel Jung, Mike McNamara, Adam Jung, Bob Taylor, Jack Baur Pat Wolff, Mary Ann Eull (taking picture)



Community Reach Holiday Meal Basket Drive – Thank you to all who supported the Community Reach Holiday Meal Basket Drive. We collected \$400 to help Community Reach provide food and gifts to families in need during Thanksgiving and Christmas. Andrea Kemper-Wink, Director of Development and Volunteer Services, sent the following message “Thank you and the congregation so much! We are serving 200 families and/or 500+

children this year, an increase of over 50% in children served, so these donations is especially needed and welcome this year. Thank you for all the support RPC has provided and continues to support Community Reach Montgomery County!”

Community Reach Volunteer Opportunities



The following are opportunities to volunteer with Community Reach:

Client Intake Coordinator – work with the Rockville Emergency Assistance Program to answer calls from Rockville clients facing eviction and in need of medical care. Work 1 four shifts per week.

Donations Needed at the Mansfield Kaseman Clinic and Housing Program – tall kitchen trash bags, small garbage bags, C-fold paper towels (#2 box), paper towels, antibacterial hand soap, hand sanitizer, scouring powder, facial tissue, toilet paper, Lysol toilet bowl cleaner, paper towel rolls, paper cups, plastic plates, bottled water, napkins, disinfecting wipes, window cleaner, bleach, floor cleaning liquid, dishwashing liquid, gloves, face masks. Call Community Reach at 301-637-0730 to arrange a pick up or drop off. If not otherwise noted, contact *Andrea Kempner-Wink* at andreakwink@cmrocks.org or 301-637-0172 for more information about volunteer opportunities.



Rainbow Place - Rainbow Place opened on November 9, and for the first time is open for 24 hours a day, 7 days a week. Rainbow Place has beds for 14 women during COVID-19.

Sponsor a Bed: Rainbow Place has launched a Sponsor-a-Bed Program. If you are interested, or know a group or company that may be interested, more information can be found at: <https://tinyurl.com/SponsoraBedatRainbow>

Rockville Rewards Cards: Rockville Rewards Cards gets you discounts at over 150 Rockville restaurants and businesses. 100% of the proceeds from the sale of the cards benefit Rockville nonprofits. When you buy a card online, it costs \$25 and you can select Rainbow Place as the recipient of that \$25 card purchase. Buy a card at <https://rockvillerewards.com/>.

Buy a Face Mask: For every facemask purchased, \$5 will be donated to Rainbow Place. Get your mask at <https://rainbowplaceshelter.square.site/>.

Nights Out for Rainbow Place 2020-2021 - From December 8 to January 19, Rainbow Place will host a "Nights Out" event. This is an event designed to take place within households. All money raised will fund the cost of renting daytime space in a new location, starting in February. More information can be found from: <http://bit.ly/NightsOut2020-21>.



The deadline for the *February* Newsletter is [Sunday, January 17th.](#)

*Happy New
Year*

