



GENEROSITY OPPORTUNITIES

2021 EDITION



EASTWIND
PENTECOSTAL CHURCH

COVID REVIVAL	6-7
WINDS CONFERENCE	8-9
HANDS FOR HEALING	12-13
BRAZIL CRUSADE	18-19

TABLE OF CONTENTS

3

- LETTER FROM PASTOR MYERS

"2020 was a challenging year for many ministries and yet you gave sacrificially and abundantly"

4

- CHURCH MINISTRIES

Helping bring Christ to our city, state and North America.

10

- COMMUNITY MINISTRIES

Hands for Healing, compassion ministries and community outreaches.

14

- GLOBAL MINISTRIES

Global Missions is the heartbeat of Eastwind. You are making an impact around the world.

20

- GENEROSITY OPPORTUNITIES - ACTS 1:8

In Jerusalem, and in all Judaea, and in Samaria, and unto the uttermost part of the earth...

22

- OUR 2021 GOAL

G.O. goals for 2021. Let's go! All Jesus · All Nations · All In

www.eastwind.church
321-723-2030



Eastwind Pentecostal Church
1021 Emerson Drive NE
Palm Bay, FL 32907

LETTER FROM PASTOR

A big thank you to the amazing Eastwind family. 2020 was a challenging year for many ministries and yet you gave sacrificially and abundantly. As a result of your giving, we were able to support missions and ministries at home and abroad. Your faithfulness allowed us to not only keep our financial commitments but to excel in our giving to others.

Among the more than 5000 churches in North America, Eastwind Pentecostal Church was in the top 10 in Global missions and in the top 20 in Ladies Ministries. God continues to teach us that He works counter-intuitive to culture. He blesses in a crisis. He heals in a pandemic. He is not held hostage to our environment.

In spite of the fact that our international crusades were postponed because of COVID-19, we gave to purchase church property in the Congo, we invested in Bible Schools in Brazil, Vietnam, Bangladesh and Madagascar. We increased our giving in all areas and we took on additional ministries and projects.



In addition to our support of Tupelo Children's Mansion, Lighthouse Ranch for Boys, New Beginnings adoption services and many other charitable ministries that we support on a regular basis, we added substantial support to a new ministry called Impact Community. This ministry funds and supports couples going into new cities in North America to start churches.

We believe God is sending revival to North America. To this end we invested in a new conference called Winds. This conference was held at our Eastwind campus and reached for Millennials and young Ministers. We focused on the 4 prophetic winds of Apostolic unity, restoration, demonstration and impartation. God met with us in such a powerful way, we believe this annual conference will give us a platform to impact this generation with prophetic winds.

God helped us to complete a remodel of our sanctuary that increased auditorium seating and foyer fellowship space. At the same time, we ramped up our Hands for Healing ministry by feeding more than 100,000 people during the COVID crisis and sending disaster relief to Louisiana after hurricane Laura.

In conclusion, the COVID-19 crisis gave us a choice. We could retreat, close our doors and limit our ministries or we could look for ways to expand the reach of our church. You rose to the occasion. Reaching more than 500,000 people online in North America and around the world. We are now poised to do even more in 2021. Let's make this the best year ever. Your commitment will make the difference.

Sincerely yours for a greater harvest,

Pastor David Myers

CHURCH MINISTRIES



EASTWIND OUTREACH MINISTRIES

Our Nursing Home Ministry reaches every month to those that are unable to attend services. Our prison team visits the prisons to bring worship and the word to those that are locked in. Our online presence has grown tremendously, reaching those that cannot be in service with us. These resources help take the gospel to those that cannot come to us.



IMPACT COMMUNITIES & NORTH AMERICAN MISSIONS

Impact Communities and NAM into metro and rural areas across the United States. It is because of funds that they receive from program like GO that they can concentrate on bulding churches in these areas. Not everyone is called to plant churches, but we are commissioned to pray and give to help those that are called.



SHEAVES FOR CHRIST

Sheaves for Christ funds events and ministries locally and nationally for our students, supplies missionaries with vehicles to help them spread the gospel, supports North American Missionaries, supplies Bible School scholarships and more! Thank you for seeing the need and going beyond the walls of our building.



CHILDREN'S MANSION

Since 1953 the mission of the Children's Mansion in Tupelo, MS is to offer hope and the love of Jesus Christ to orphaned or disadvantaged children by providing a safe home at the mansion. Ministering to the children's physical, spiritual, emotional, social, and educational needs. As well as equipping them to lead productive lives.



LIGHTHOUSE BOY'S RANCH

The Lighthouse Ranch for Boys program is for boys (12-17 yrs. old) who need a stable environment. Many have been victims of abuse, neglect, drugs, and unstable homes. The Lighthouse Ranch is able to provide a consistent, stable and structured place to help these young men grow.



MOTHER'S MEMORIAL

This Ladies ministry fund supports 11 different causes including the New Beginnings, Multicultural Ministries, World Network of Prayer, Tupelo Children's Mansion, appliances for missionaries, bible studies and tracts for North American Missionaries and more.



NEW BEGINNINGS

New Beginnings International Children's & Family Services is focused on promoting life and new beginnings for children, birth mothers and families through parenting education and adoption.



SAVE OUR CHILDREN

This funds the General Sunday School Division. 50% of funds remain in Florida for projects such as Junior camps, children's crusades, teacher training, and Junior Bible Quizzing and 50% goes to the General Sunday School Division for various children's ministries in North America.



URSHAN COLLEGE

UGS is leading the way for accredited Apostolic education. UGS is empowering young men and women to be leaders and fulfill their calling to go boldly into their communities and share the message of Jesus Christ.

BIBLE QUIZZING

EASTWIND ORGANIZED & HOSTED THE LARGEST BIBLE QUIZ TOURNAMENT OF 2020! THE 3RD ANNUAL WALT DISNEY WORLD TOURNAMENT WAS AGAIN A SUCCESS WITH 80 TEAMS REGISTERED FROM 11 DIFFERENT STATES ACROSS THE COUNTRY.



IN 2020 WE HAD 11 TEAMS OF 25 QUIZZERS THAT MEMORIZED THE WORD OF GOD! DUE TO COVID, OUR TEAMS ONLY GOT TO COMPETE IN 2 TOURNAMENTS BEFORE THE SEASON WAS SUSPENDED IN EARLY MARCH.



OUR SENIOR TEAMS ATTENDED EXTRAVAGANZA & PLACED 1ST & 4TH!



MARCH 22ND - MAY 20TH
60 STRAIGHT DAYS OF BROADCASTS

MARCH - JUNE
129 PROGRAMS WERE BROADCASTED

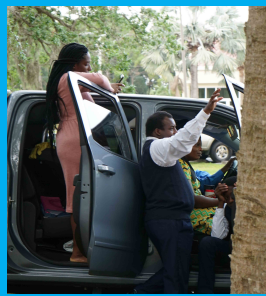
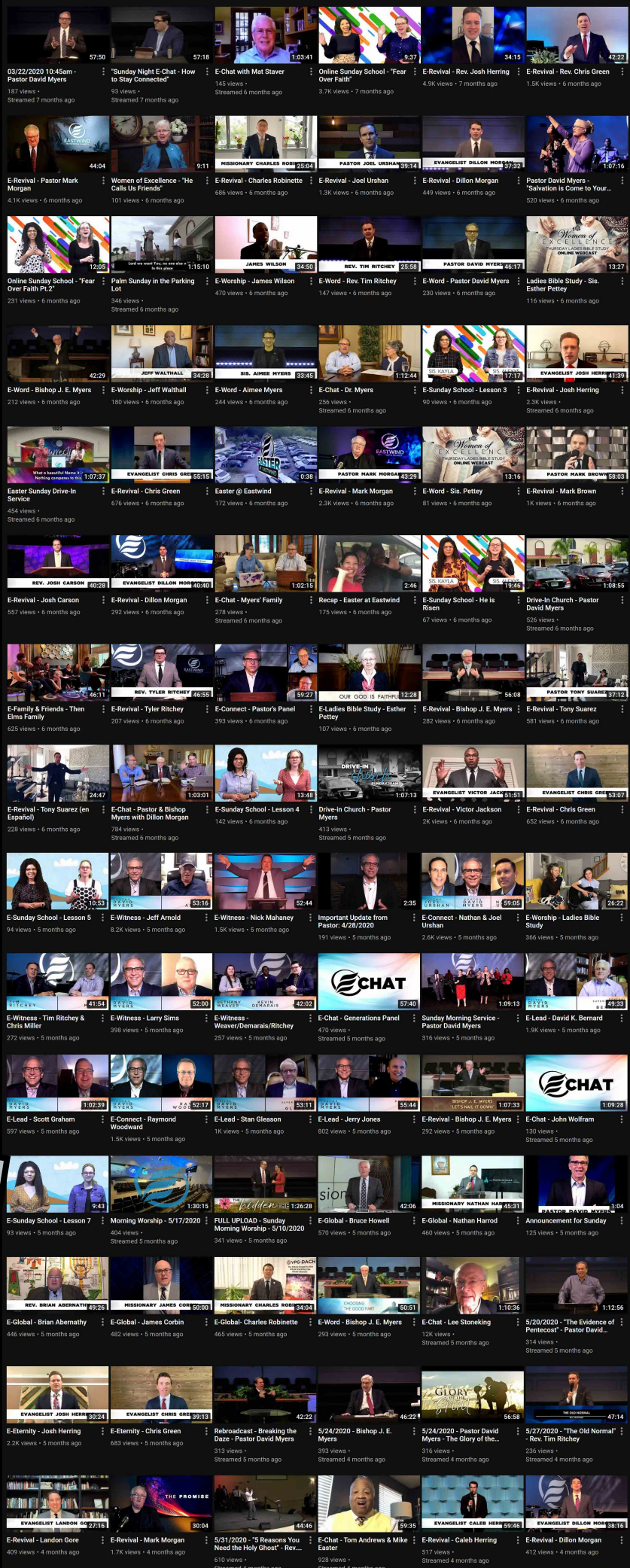
E-REVIVAL VIEWS

223K - Facebook
102K - Youtube
13k - Vimeo/CWM

TOTAL REACH

614 - Cities
50 - States
39 - Territories
37 - Countries

COVID-19 REVIVAL



DRIVE-IN CHURCH



CHURCH MINISTRIES

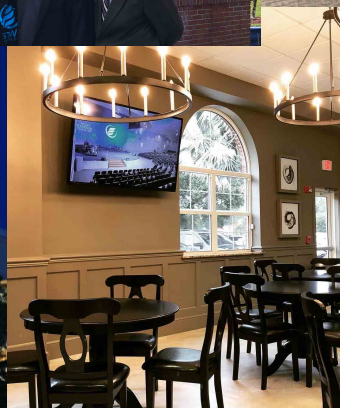
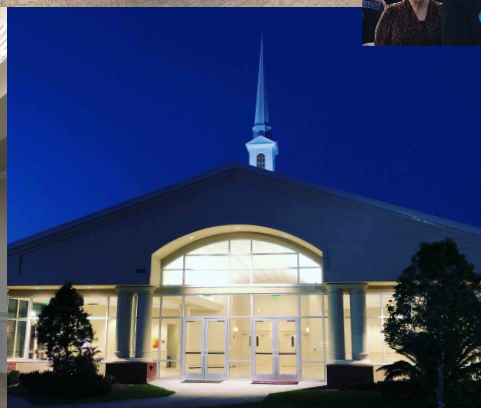


IN 2020 WE CHANGED OUR NAME FROM FIRST PENTECOSTAL CHURCH TO EASTWIND PENTECOSTAL CHURCH. NEW NAME, SAME SPIRIT.



EASTWIND
PENTECOSTAL CHURCH

IN 2020 WE REMODELED OUR MAIN FACILITIES. EXPANDING THE FOYERS & OFFICE. UPDATING ALL FLOORING, PAINT, RESTROOMS & FURNISHINGS.



WINDS
CONFERENCE





COMMUNITY MINISTRIES



Pregnancy Resources is a non-profit Christian agency where women in our local community can receive confidential, caring, free support for an unexpected pregnancy.



Hands for Healing is Florida's largest food bank and provides food for 1000+ families and individuals each week that are facing hunger in our local community. They also provide disaster relief.



Candlelighters of Brevard is a non-profit organization that makes sure that Brevard county families with children that have been diagnosed with cancer have the resources and support they need during this very difficult time.



International nonprofit litigation, education and policy organization for advancing religious freedom, the sanctity of life, and the family since 1989, by providing pro bono assistance and representation.



The Benevolence fund at Eastwind is able to provide support to members in need, help with unexpected hardship expenses, provide flowers for surgeries, and transportation to those who would not be able to attend services otherwise.



REACHING OUR COMMUNITY

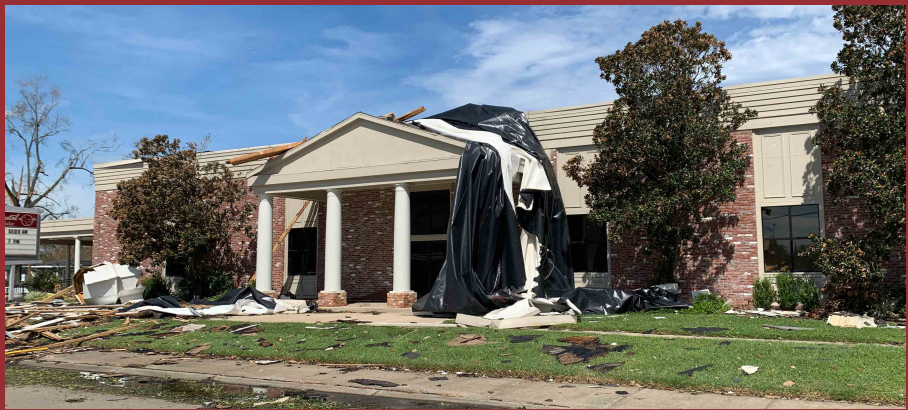




**3,114,487
POUNDS OF FOOD
DISTRIBUTED**

**2,595,406
MEALS PROVIDED TO
THOSE IN NEED**

HURRICANE RELIEF PROVIDED TO LOUISIANA



HAITI MEDICAL CLINIC AND ORPHANAGE IS EXPANDING AGAIN





**WE SUPPORTED
81 MISSIONARIES
ACROSS THE GLOBE**

2020 SPECIAL PROJECTS GO SUPPORTED

**BIBLE SCHOOL SUPPORT
IN BRAZIL, VIETNAM,
BANGLADESH AND
MADAGASCAR**

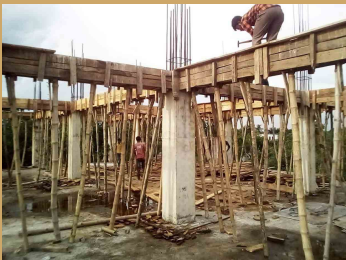
**MANAUS, BRAZIL
CRUSADE**

**GUATEMALA CRUSADE
& CHURCH PLANTS**

**CHURCH BUILDING
IN CONGO**

**NEPAL CHILDREN'S
ORPHANAGE**

BANGLADESH BIBLE SCHOOL CONSTRUCTION



HOME INTERNATIONAL ORPHANAGE



REVIVAL DURING COVID PANDEMIC

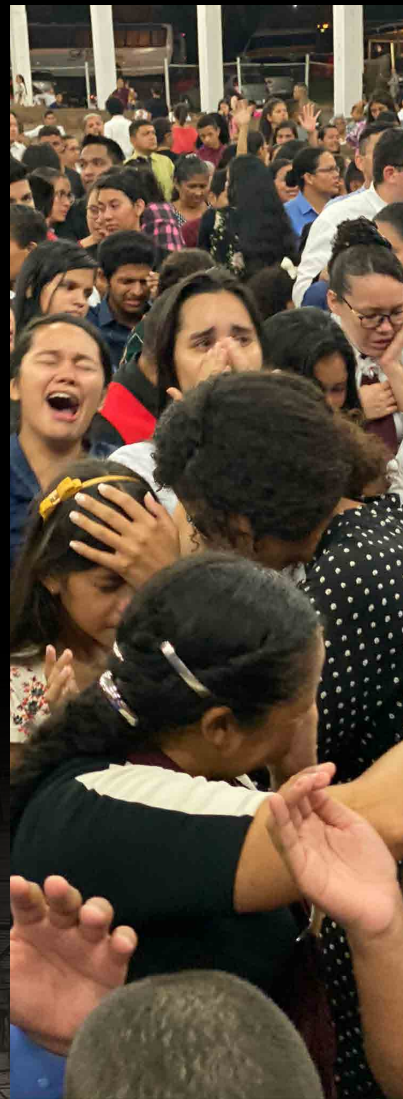
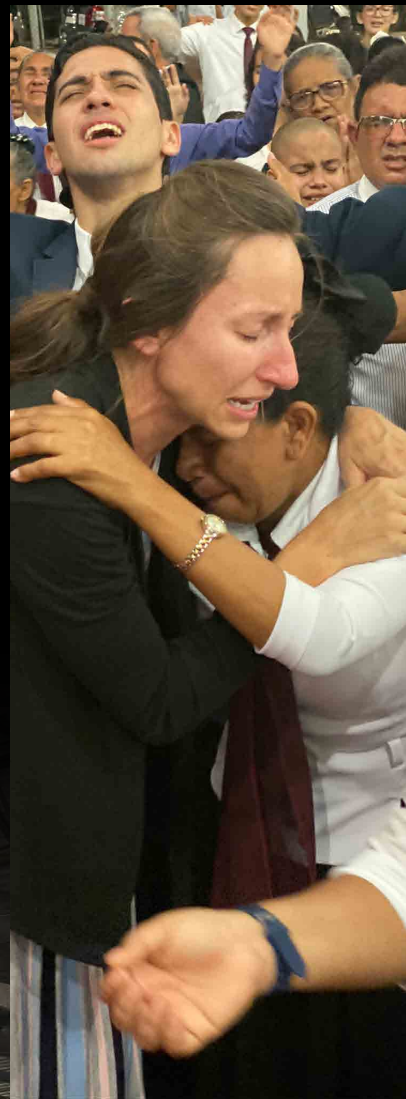


BIBLE SCHOOL TRAINING AROUND THE WORLD



REACHING OUT TO ALL DURING COVID





64 FILLED WITH THE HOLY SPIRIT



GENEROSITY

OPPORTUNITIES



The hour is late and
the need is great

ACTS 1:8 COMMISSION

*But ye shall receive power, after that the Holy Ghost is come upon you:
and ye shall be witnesses unto me both in Jerusalem, and in all Judaea,
and in Samaria, and unto the uttermost part of the earth.*

Just prior to His ascension, Jesus left the words of Acts 1:8 with His faithful few. This commission highlighted a world-wide revival that would start on the Day of Pentecost in Jerusalem and spread to the uttermost part of the world.

This revival permeated Jerusalem, Samaria, Judea, parts of Asia and eventually the world. This Church, Community, and Global model for ministry was fulfilled in the book of Acts and we have sought to model Eastwind in the same manner.

Our local church, community programs, and global missions endeavors all depend on your generosity. In the past, we have petitioned you for special offerings throughout each year to cover these ministry efforts. This annual program, named Generosity Opportunities (GO), will give the church

and each giving member the ability to plan and budget for the upcoming year.

GO will not replace weekly tithes and offerings. However, our intent is to eliminate other special offering requests throughout the year by consolidating these needs into one annual pledge program. In doing so this will allow you to more easily budget for the opportunities you would like to support. This commitment will allow the church to plan for the year ahead based on the received pledges.

We encourage you to prayerfully consider stepping out in faith. Let God use your generosity to spread the gospel to those in need at home and abroad.



Together we can fulfill the ministry model
that Jesus Christ gave to us in Acts 1:8

*Give, and you will receive. Your gift will return to you in full - pressed down,
shaken together to make room for more, running over, and poured into your lap.
The amount you give will determine the amount you get back.*
LUKE 6:38 (NLT)

FREQUENTLY ASKED QUESTIONS

Should I list my tithe and regular offering amount on this pledge?





No. Continue to tithe and give as the Lord has blessed you! This pledge will cover the opportunities that are over and above the funds collected through standard giving. You will have the ability to specify on the GO pledge card which ministries you want your funds to support.

Will I get an annual giving receipt to use for tax purposes?

Yes. You will receive the same giving record as in years past. It will include any designated tithes, offerings and paid pledges for the year.

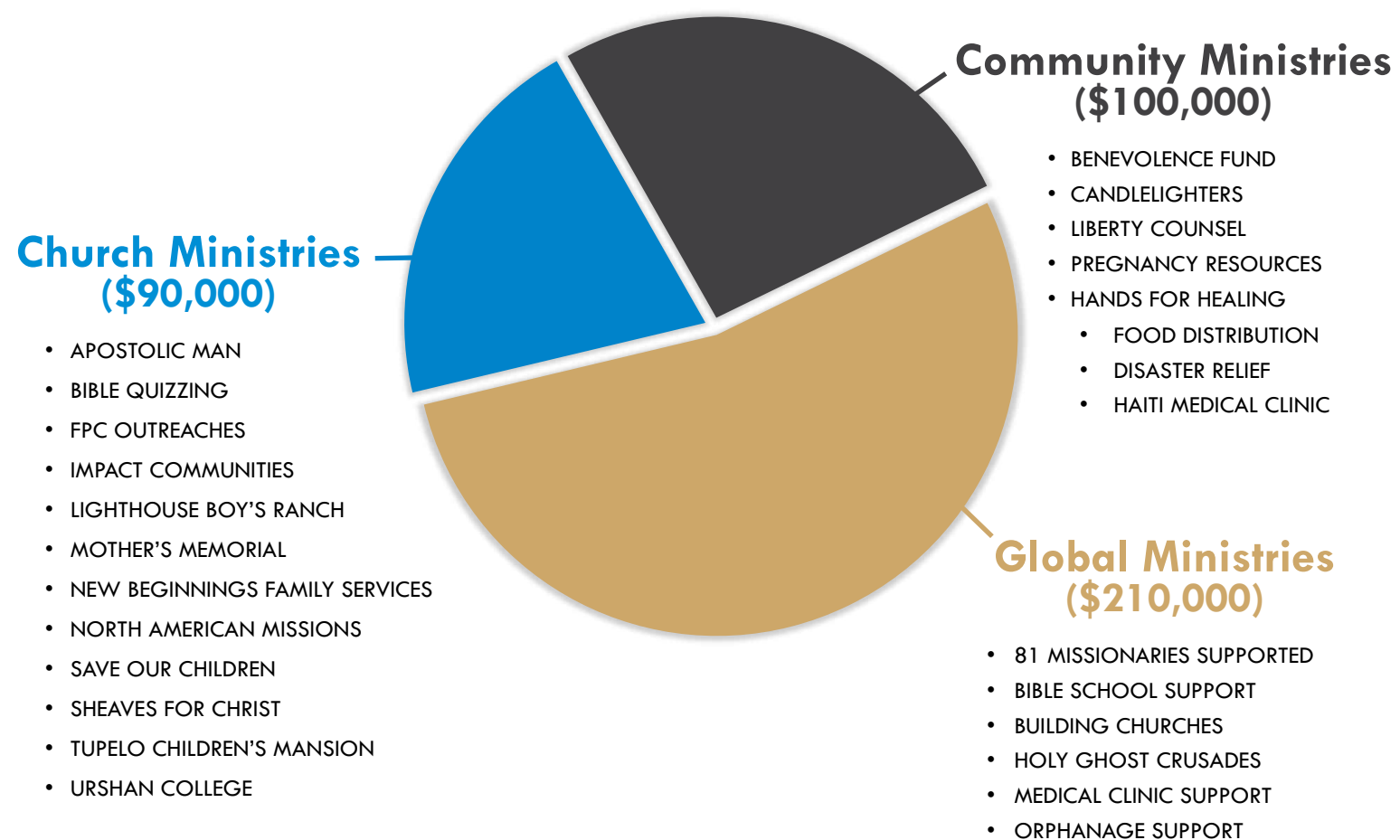
What payment methods will be available for this pledge?

We have a number of ways for you give and below are the current options available. Please be sure to mark GO offerings accordingly.

-  BASKET - Give using the offering basket during services.
-  ONLINE - Visit give.eastwind.church to give from any device.
-  TEXT - Text the amount you would like to give to 321-339-1333.
-  APP - Give using the app "Tithe.ly" and search for Eastwind.

OUR GOAL

Our local church, community programs and global missions endeavors all depend on your generosity.



TOTAL GOAL FOR 2021
\$400,000



LET'S GO! CREATIVE WAYS TO GIVE

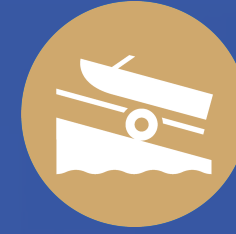
...God loveth a cheerful giver.
2 Corinthians 9:7



YEARLY TAX RETURN
 The average tax return for 2020 was \$2,973. You can give a return to God.



SAVINGS & INVESTMENTS
 No investment yields returns like investing in God's kingdom, yielding gains for eternity.



DISPOSABLE ASSETS
 Consider selling items that are underutilized or taking up space and turn them into a gift.



BUDGET REDUCTION
 What can I cut back on or give that I don't really need?

UNEXPECTED PROVISION

When we give faithfully to the Lord, He provides resources we never expected. Trust Him to help you give to the work of the Lord!

